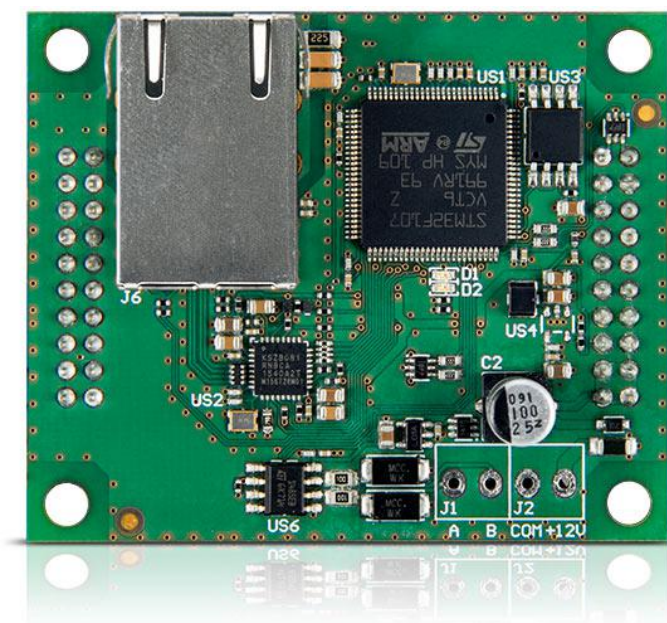


# GSM-X-ETH

## ETHERNET MODULE FOR GSM-X LTE AND GSM-X

**GSM-X-ETH** is a device designed to expand the communication options of the **GSM-X LTE** and **GSM-X** universal modules by adding Ethernet capability. This channel may be used in parallel with data transmission via cellular network or as an alternative to it. Configuration of priorities for the use of individual paths for specific functions is available. This option enables the **GSM-X LTE** and **GSM-X** modules settings to be optimally suited to the needs of a specific system.

- compatible with: **GSM-X LTE**, **GSM-X**
- support for Ethernet as additional communication channel



### TECHNICAL DATA

Board dimensions	61 x 51 mm
Operating temperature range	-10...+55°C
Standby mode current consumption	25 mA
Max. current consumption	25 mA
Weight	25 g
Maximum humidity	93±3%
Environmental class according to EN50130-5	II

